

# NEW PRESENCE MOBILE & FLOOR



Let it be the center of your show

## Stable and easy handling of heavy displays

Updated and improved! An ergonomic and flexible product that is easy to move and easy to install. Attractive and elegant on all sides, and thus able to be placed in the center of the room. Since we never get tired of improvements, our premium floorstand now has even more refined details as well as a new color option, Dark Grey. Perfect for large, heavy displays and touch-sensitive displays, due to the very stable, patented design.

The display can be locked with the accompanying locking screw for personal safety, or with a padlock (not included) which provides increased protection from theft. Brand new is the option of a foot possible to bolt to the floor. Or, for moving the display smoothly to another room, choose the wheel base with four sturdy and elegant castors, all are equipped with wheel brakes. The pre-factory assembly of the Presence series means that installation is easy and quick.

The design of the Presence series is, furthermore, protected. Maximum display weight: 150 kg. Finish: Dark Grey.



### ARTICLE NUMBER

K05-121-2  
SMS Presence Floor 1000x600 1290 DG

### INCLUDED PRODUCTS

SMS Presence Mobile Body 1290  
1 x 05-015-2  
SMS Presence Floor 1290 Covers DG  
1 x 05-035-2  
SMS Presence Floor Foot DG  
1 x 05-009-2  
MultiMount PRO 106 A/DG  
1 x 03-010-6

### INFO

<b>PLACEMENT</b>	Floor
<b>VESA HORIZONTAL</b>	200 - 1000
<b>VESA VERTICAL</b>	400 - 600
<b>MAX WEIGHT [KG]</b>	150
<b>SCREEN SIZE</b>	max 84" (85-98" max 100kg)
<b>WARRANTY [YEARS]</b>	5

# PRODUCT VARIATIONS

**K05-121-2 - SMS PRESENCE FLOOR 1000X600 1290 DG**

---

**K05-107-2 - SMS PRESENCE MOBILE 1000X600 1290 DG**

---

**K05-119-2 - SMS PRESENCE FLOOR 600X400 1290 DG**

---

**K05-105-2 - SMS PRESENCE MOBILE 600X400 1290 DG**

---

**K05-122-2 - SMS PRESENCE FLOOR 1000X600 1650 DG**

---

**K05-108-2 - SMS PRESENCE MOBILE 1000X600 1650 DG**

---

**K05-120-2 - SMS PRESENCE FLOOR 600X400 1650 DG**

---

**K05-106-2 - SMS PRESENCE MOBILE 600X400 1650 DG**



# ACCESSORIES



## **PRESENCE CAMERA SHELF**

PR100001



## **FEET SET**

PD100011



## **SMS PRESENCE SHELF - WALL/FLOOR**

PR100004-P0

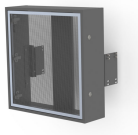
## **SMS PRESENCE SHELF - MOBILE**

PR100002-P0



## **SMS PRESENCE VESA BARS 600**

PR210201



## **SMS PRESENCE TOWER BOX - WALL/FLOOR**

C5-21U004-2-A

## **SMS PRESENCE TOWER BOX - MOBILE**

C5-21U006-2-A